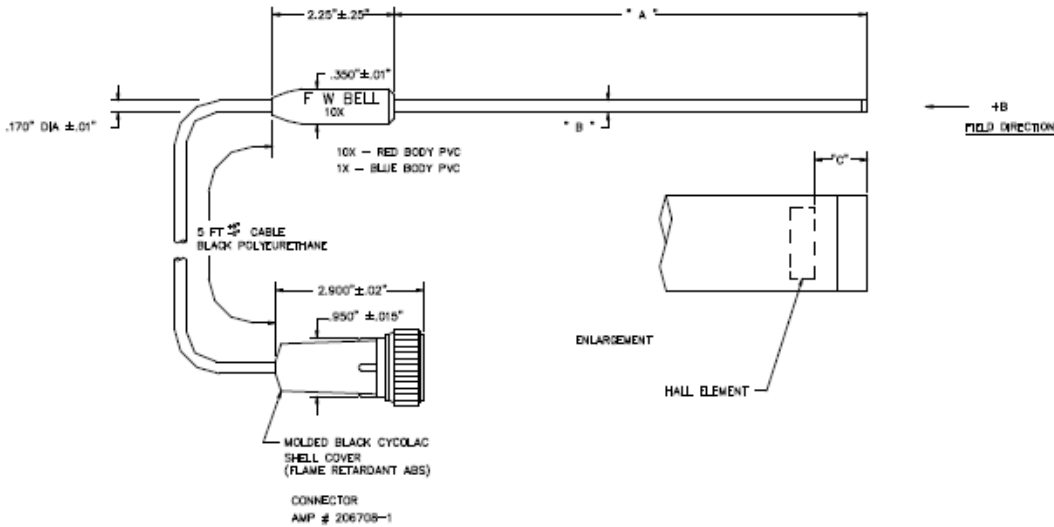


## Gaussmeter probes 9900 series



The fourth generation transverse probes are precision, solid state magnetic field sensors designed for use with the F.W. Bell gaussmeters to provide stable and repeatable transverse magnetic field measurements.

These units feature ruggedized construction combined with a balanced, light weight design suitable for manual or fixture applications. They offer a variety of Hall effect sensors available in graduated stem types and lengths to provide the physical and electrical characteristics required for the great majority of transverse field measurements.

### Contact

OECO  
4607 SE International Way  
Milwaukie, OR 97222  
USA

Tel: +1 (503) 659-5999

[www.meggitt.com](http://www.meggitt.com)

[www.fwbell.com](http://www.fwbell.com)

[www.oeco.com](http://www.oeco.com)

## Gaussmeter probes 9900 series

### Transverse specifications

<u>Model</u>	<u>A</u>	<u>B</u>	<u>C</u>	<u>D</u>	<u>Stem</u>	<u>Linearity</u>	<u>Frequency</u>	<u>Sensitivity</u>	<u>Active area</u>
STF99-0402	2"	0.150" ± .004"	0.040"	.145" ± .063"	Rigid glass epoxy	.25% – 30 kG	DC to 10 kHz	1X	.070" dia.
STF99-0404	4"	0.150" ± .004"	0.040"	.145" ± .063"	Rigid glass epoxy	.25% – 30 kG	DC to 10 kHz	1X	.070" dia.
STM99-0402	2"	0.150" ± .004"	0.040"	.145" ± .063"	Rigid glass epoxy	.15% – 30 kG	DC only	10X	.040" dia.
STM99-0404	4"	0.150" ± .004"	0.040"	.145" ± .063"	Rigid glass epoxy	.15% – 30 kG	DC only	10X	.040" dia.
STR99-0402	2"	0.150" ± .004"	0.040"	.145" ± .063"	Rigid glass epoxy	1% – 100 kG	DC only	10X	.040" dia.
STR99-0404	4"	0.150" ± .004"	0.040"	.145" ± .063"	Rigid glass epoxy	1% – 100 kG	DC only	10X	.040" dia.
HTF99-0608	8"	0.180" ± .003"	.060"	.145" ± .063"	Aluminum	.25% – 30 kG	DC to 10 kHz	1X	.070" dia.
HTF99-0618	18"	0.180" ± .003"	.060"	.145" ± .063"	Aluminum	.25% – 30 kG	DC to 10 kHz	1X	.070" dia.
HTM99-0608	8"	0.180" ± .003"	.060"	.145" ± .063"	Aluminum	.15% – 30 kG	DC only	10X	.040" dia.
HTM99-0618	18"	0.180" ± .003"	.060"	.145" ± .063"	Aluminum	.15% – 30 kG	DC only	10X	.040" dia.
HTR99-0608	8"	0.180" ± .003"	.060"	.145" ± .063"	Aluminum	1% – 100 kG	DC only	10X	.040" dia.
HTR99-0618	18"	0.180" ± .003"	.060"	.145" ± .063"	Aluminum	1% – 100 kG	DC only	10X	.040" dia.
CTP99-3260	60"	.312" ± .005"	n/a	.320" ± .063"	Stainless steel	1% – 30 kG	DC only	10X	.040" dia.
CTU99-3260	60"	.312" ± .005"	n/a	.320" ± .063"	Stainless steel	2% – 100 kG	DC only	10X	.040" dia.
STA99-0404	4"	0.150" ± .004"	0.040"	.145" ± .063"	Rigid glass epoxy	.25% – 10 kG	DC to 50 kHz	1X	.080" dia.
STF99-0204	4"	0.155" ± .005"	0.040"	.130" ± .008"	Flexible rubber	.25% – 30 kG	DC to 10 kHz	1X	.070" dia.
STM99-0204	4"	0.155" ± .005"	0.040"	.130" ± .008"	Flexible rubber	.15% – 30 kG	DC only	10X	.040" dia.
STR99-0204	4"	0.155" ± .005"	0.040"	.130" ± .008"	Flexible rubber	1% – 100 kG	DC only	10X	.040" dia.
STC99-0104	4"	0.155" ± .005"	0.040"	.055" ± .005"	Flexible rubber	.5% – 10 kG	DC to 10 kHz	1X	.040" dia.
STC99-0004	4"	0.155" ± .005"	0.040"	.05" ± .005"	Flexible rubber	.5% – 10 kG	DC to 10 kHz	1X	.030" dia.