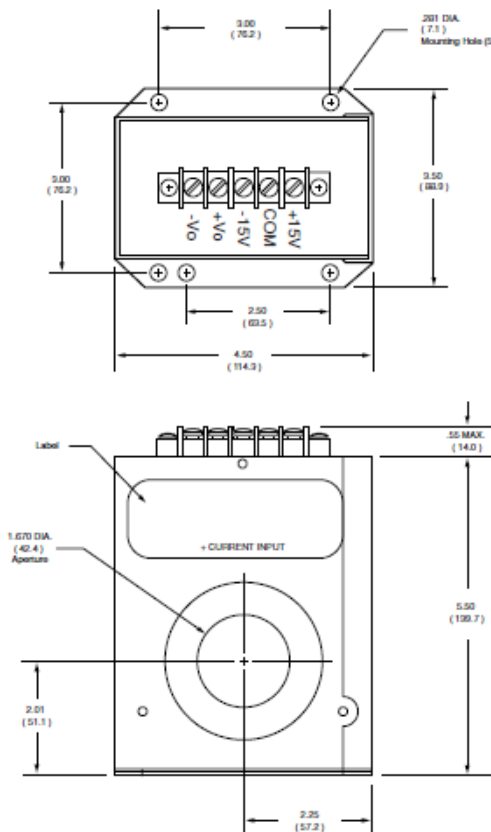


# Current sensors IA series



The IA series Hall effect sensors accurately measure DC and AC currents and provide electrical isolation between the output of the sensor and the current carrying conductor



## Features

- High accuracy
- Wide frequency range
- Excellent linearity
- Safety isolation
- DC current measurement
- Heavy duty housing

## Applications

- Motor controllers and drives
- Battery supplied equipment
- Switch mode and power supplies
- Welding equipment
- Traction sensing

## Contact

OECO  
 4607 SE International Way  
 Milwaukie, OR 97222  
 USA

Tel: +1 (503) 659-5999

[www.meggitt.com](http://www.meggitt.com)

[www.fwbell.com](http://www.fwbell.com)

[www.oeco.com](http://www.oeco.com)

## Meggitt Sensing Systems

Our product competencies and services:  
 Avionics displays | Inertial sensors | Ignition systems | Performance Sensing | Power & Motion | Sensing & Monitoring



## Current sensors

# IA series

### Specifications

Model:	IA-500	IA-1000	IA-2000	IA-3000
Full scale DC or AC peak	500 A	1000 A	2000 A	3000 A
Full scale output	10 V			
Frequency response	DC (permissible ripple current <200 A rms at 360 Hz)			
Response time	< 150 μs			
Supply voltage	15 Vdc			
Max. positive supply current	50 mA			
Max negative supply current	10 mA			
Output sensitivity	20 mV/A	10 mV/A	5 mV/A	3.3 mV/A
Output linearity	0.5 % FS	0.5 % FS	0.5 % FS	0.6 % FS
Calibration point	0.5 % RDG			
Typical zero current offset	10 mV			
Maximum zero current offset	50 mV			
Maximum hysteresis of offset	50 mV	25 mV	15 mV	15 mV
Minimum load resistance	> 2 k ohms			
Typical offset drift with temperature	1 mV / °C			
Max. offset drift with temperature	2 mV / °C			
Max. sensitivity change	0.03%			
Typical sensitivity drift with temperature	0.015 % / °C			
Max. sensitivity drift with temperature	0.02 % / °C			
Dielectric test	2.5 kV			
Output short or open	No damage			
Operating temperature	-30 to 75 °C			
Storage temperature	-40 to 85 °C			
Package	Rugged metal case			
Aperture opening	1.67 in. ( 42.4 mm)			
Weight	5 lbs. and 10 oz. ( 2.6 kg)			

Note: Due to continuous process improvement, specifications are subject to change without notice