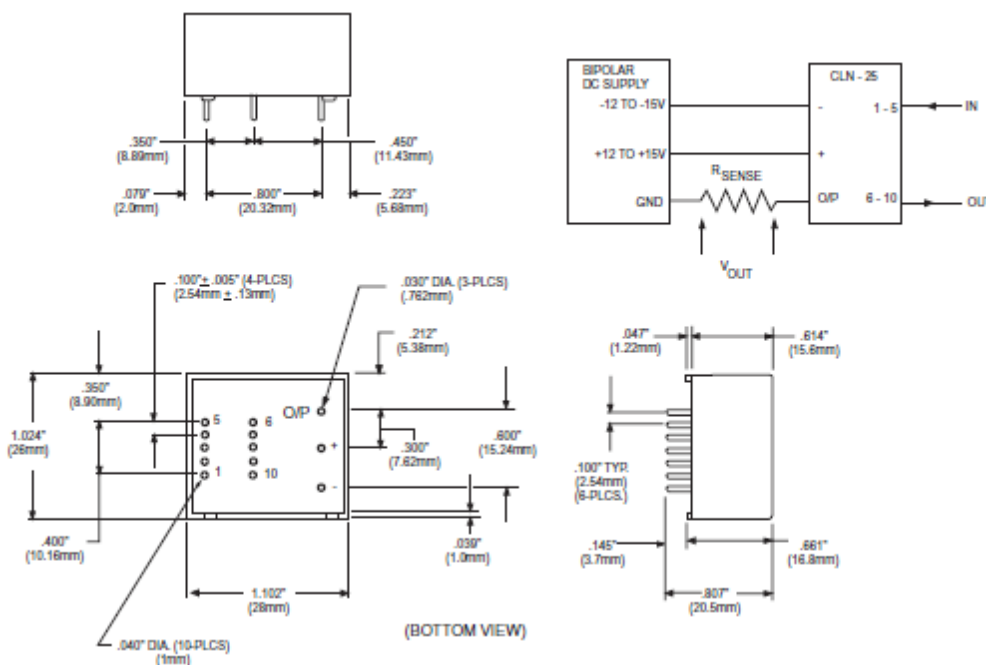


Current sensors CLN series



The CLN models are closed loop Hall effect current sensors that accurately measure AC and DC currents and then provide electrical isolation between the current carrying conductor and the output of the sensor.

Model **CLN-25**



Features

- High overload capacity
- PC board mount
- Sensing up to 400 A
- Fast response
- High accuracy
- Measures AC, DC, and impulse currents
- Noncontact measurement of high current

Applications

- Variable speed drives for motors
- Welding equipment
- Power supply equipment
- Measure and control system
- Over current protection
- Protection of power semiconductors

Contact

OECO
 4607 SE International Way
 Milwaukie, OR 97222
 USA

Tel: +1 (503) 659-5999

www.meggitt.com

www.fwbell.com

www.oeco.com



Current sensors

CLN series

Specifications

Model:	CLN-25	CLN-50	CLN-100	CLN-300	CLN-500
Nominal current	25 A	50 A	100 A	300 A	500 A
Measure range	0 to 36 A	0 to 90 A	0 to 150 A	0 to 600 A	0 to 1200 A
Nominal analog output current	25 mA	50 mA	100 mA	150 mA	100 mA
Turns ratio	1-2-3-4:1000	1:1000	1:1000	1:2000	1:5000
Accuracy at 25° C	0.5%	0.5%	0.5%	0.5%	0.5%
Supply voltage	12 to 15 V	12 to 15 V	12 to 15 V	12 to 18 V	15 to 24 V
Linearity	Better than 0.2%		Better than 0.1%		
Reponse time at 50%	< 1 μs	< 500 ns	< 500 ns	< 500 ns	< 1 μs
Bandwidth	0-150 kHz	0-150 kHz	0-150 kHz	0-150 kHz	0-100 kHz
Operating temperature range	-40° C to 85° C				
Storage temperature range	-40° C to 90° C				
Weight	16 g	18 g	21 g	340 g	340 g
Package	Flame retardant plastic case				
Mounting	Panel mount				

Note: Due to continuous process improvement, specifications are subject to change without notice