

Current sensors

PC and PCS series

Features

- UL listed
- Loop powered
- Range selected on sensor
- Only requires two wire connection
- Split core for easy installation

Contact

OECO
 4607 SE International Way
 Milwaukie, OR 97222
 USA

Tel: +1 (503) 659-5999

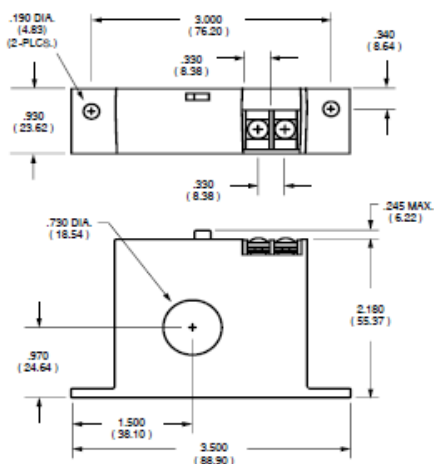
www.meggitt.com

www.fwbell.com

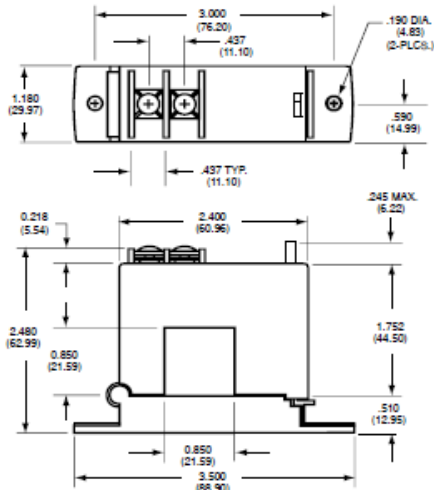
www.oeco.com

The PC/PCS series current sensors accurately measure sinusoidal AC current and provide a 4–20 mA DC output proportional to the RMS value. They are loop powered requiring only a two wire connection. The PCS-50 and PCS-200 clamp over existing wiring for easy installation.

PC



PCS



Meggitt Sensing Systems

Our product competencies and services:
 Avionics displays | Inertial sensors | Ignition systems | Performance Sensing | Power & Motion | Sensing & Monitoring

MEGGITT
 smart engineering for
 extreme environments



- Actuators
- Current sensors
- Motors
- Position sensors
- Power conversion
- Power generation

Current sensors

PC and PCS series

Specifications

Model:	PC-50	PC-200	PCS-50	PCS-200
Current range	50 A	200 A	50 A	200 A
Output	4 to 20 mA			
Frequency range	20 to 100 Hz			
Supply voltage	5 to 40 V DC			
Accuracy	0.5% full scale			
Repeatability	0.1% full scale			
Linearity	0.1% full scale	0.1% full scale	0.3% full scale	0.3% full scale
Response time	300 ms			
Ripple and noise	8 mV			
Output current	40 mA			
Internal protection	Reverse voltage protection, high over current capability			
Dielectric test	5 kV			
Operating temperature	-20 to 50 °C			
Aperture opening	0.73 in. (18.5 mm)	0.73 in. (18.5 mm)	0.85 in. (21.6 mm)	0.85 in. (21.6 mm)
Weight	92 g	92 g	121 g	121 g
Mounting	Panel mount via two #6 screws			
Package	ABS plastic case meets UL flammability rating 94 V - 0			

Note: Due to continuous process improvement, specifications are subject to change without notice